

YEAR

2013

LINK CONNAUGHT RD C (from CLEVERLY ST to GILMAN ST)

COVERAGE (B) STATION

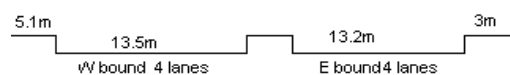
2207

ROAD NETWORK

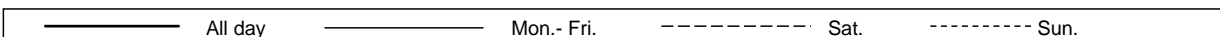
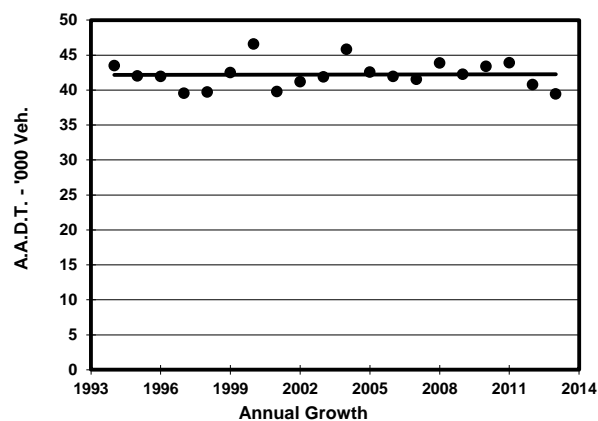
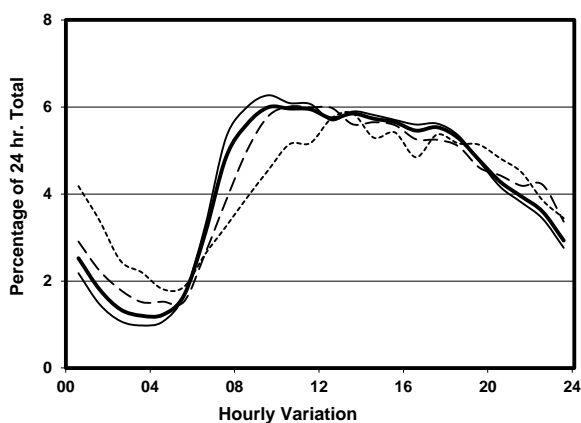
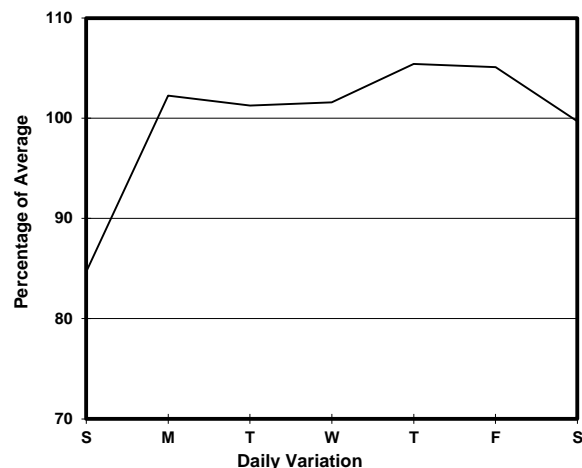
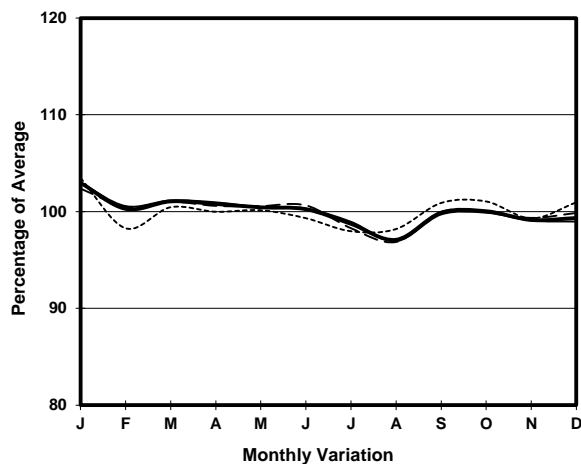
MAJOR

ROAD TYPE

PRIMARY DISTRIBUTOR



1. TRAFFIC FLOW VARIATION AND GROWTH



2. TRAFFIC CHARACTERISTICS (BY DIRECTION)

| Parameter | All - Day | Mon. - Fri. | Sat. | Sun. |
|--------------------------------------|-----------|-------------|-----------|-----------|
| EAST BOUND | | | | |
| A.A.D.T. | 25320 | 26400 | 25230 | 21530 |
| R 12 / 24 - % | 66.1 | 67.8 | 63.7 | 58.1 |
| R 16 / 24 - % | 83 | 84.3 | 81.2 | 76.5 |
| AM Peak Hour | 0900-1000 | 0700-0800 | 0900-1000 | 0900-1000 |
| One-way flow at AM peak hour | 1480 | 1650 | 1480 | 990 |
| T - % (AM) | - | 25.6 | - | - |
| PM Peak Hour | 1700-1800 | 1600-1700 | 1800-1900 | 1700-1800 |
| One-way flow at PM peak hour | 1360 | 1450 | 1270 | 1190 |
| T - % (PM) | - | 14.6 | - | - |
| Prop.of commercial vehicles - 16 hr. | - | 15.2 | - | - |
| WEST BOUND | | | | |
| A.A.D.T. | 14120 | 14620 | 14410 | 12160 |
| R 12 / 24 - % | 70.4 | 72.2 | 67.6 | 62.6 |
| R 16 / 24 - % | 86.4 | 87.7 | 84.7 | 80.7 |
| AM Peak Hour | 0900-1000 | 0900-1000 | 0900-1000 | 0900-1000 |
| One-way flow at AM peak hour | 890 | 980 | 810 | 540 |
| T - % (AM) | - | 12.6 | - | - |
| PM Peak Hour | 1700-1800 | 1700-1800 | 1600-1700 | 1800-1900 |
| One-way flow at PM peak hour | 820 | 870 | 890 | 680 |
| T - % (PM) | - | 12.3 | - | - |
| Prop.of commercial vehicles - 16 hr. | - | 11.1 | - | - |

3. OTHER INFORMATION AND COMMENT

4. Vehicle classification and occupancy - Monday to Friday

| Time | | Class of vehicle | | | | | | | | | |
|------------------------|-----|------------------|----------------|------|---------------|------|------------|-------|----------------|---------|------|
| | | Motor Cycle | Private Car | Taxi | Private LB | PLB | Goods veh. | | Non Fr. Bus | Fr. Bus | |
| | | | | | | | Light | M & H | | SD | DD |
| 0700-0800 | Pro | 1.4 | 10.7 | 46.4 | 1.7 | 3.4 | 15.3 | 1.4 | 4.2 | 0.4 | 15.1 |
| | Ocp | 1.2 | 1.4 | 1.8 | 3.7 | 11.5 | 1.5 | 2.4 | 14.0 | 14.0 | 26.8 |
| 0800-0900 | Pro | 1.6 | 22.0 | 44.6 | 0.6 | 2.2 | 5.7 | 0.5 | 8.5 | 0.2 | 14.1 |
| | Ocp | 1.2 | 1.3 | 1.9 | 2.0 | 13.2 | 1.8 | 1.7 | 33.8 | 20.5 | 32.7 |
| 0900-1000 Peak hour | Pro | 1.9 | 28.9 | 36.0 | 1.4 | 2.2 | 13.7 | 1.4 | 1.2 | 0.2 | 13.0 |
| | Ocp | 1.1 | 1.5 | 2.0 | 2.4 | 9.5 | 1.8 | 1.7 | 24.5 | 13.5 | 17.1 |
| 1000-1100 | Pro | 0.5 | 25.8 | 45.0 | 0.8 | 1.4 | 13.2 | 0.8 | 0.9 | 0.4 | 11.2 |
| | Ocp | 1.0 | 1.5 | 2.0 | 3.6 | 7.9 | 1.8 | 1.8 | 16.2 | 7.4 | 14.2 |
| 1100-1200 | Pro | 0.7 | 26.6 | 41.5 | 0.7 | 1.6 | 20.0 | 0.7 | 0.4 | 0.3 | 7.3 |
| | Ocp | 1.0 | 1.6 | 1.9 | 2.2 | 6.5 | 1.6 | 2.4 | 15.3 | 8.7 | 15.1 |
| 1200-1300 | Pro | 2.2 | 27.8 | 43.0 | 1.0 | 1.3 | 14.6 | 1.3 | 0.9 | 0.3 | 7.6 |
| | Ocp | 1.0 | 1.5 | 2.0 | 3.6 | 7.4 | 1.5 | 1.6 | 2.8 | 4.8 | 14.3 |
| 1300-1400 | Pro | 2.4 | 27.5 | 39.8 | 0.5 | 1.4 | 17.5 | 1.4 | 1.6 | 0.2 | 7.6 |
| | Ocp | 1.1 | 1.5 | 2.0 | 2.3 | 10.3 | 1.5 | 2.0 | 12.3 | 10.7 | 11.9 |
| 1400-1500 | Pro | 1.2 | 28.9 | 38.1 | 0.6 | 2.5 | 16.6 | 1.2 | 2.5 | 0.2 | 8.2 |
| | Ocp | 1.1 | 1.6 | 2.1 | 3.3 | 7.6 | 1.8 | 1.9 | 7.0 | 6.7 | 13.1 |
| 1500-1600 | Pro | 1.0 | 39.7 | 33.8 | 1.5 | 1.2 | 11.8 | 0.9 | 1.5 | 0.2 | 8.4 |
| | Ocp | 1.0 | 1.4 | 2.1 | 3.6 | 8.1 | 1.5 | 2.0 | 8.3 | 6.4 | 13.8 |
| 1600-1700 | Pro | 1.8 | 42.4 | 29.7 | 0.9 | 1.4 | 10.2 | 1.3 | 1.6 | 0.3 | 10.5 |
| | Ocp | 1.1 | 1.4 | 2.0 | 4.6 | 5.6 | 1.7 | 1.4 | 11.3 | 5.5 | 12.7 |
| 1700-1800 | Pro | 2.6 | 32.8 | 39.4 | 1.9 | 1.4 | 6.2 | 0.2 | 2.8 | 0.2 | 12.6 |
| | Ocp | 1.1 | 1.4 | 1.8 | 4.7 | 9.0 | 1.8 | 1.0 | 6.6 | 9.2 | 14.3 |
| 1800-1900 | Pro | 3.5 | 35.2 | 41.5 | 0.7 | 1.4 | 2.8 | 0.2 | 2.6 | 0.3 | 11.8 |
| | Ocp | 1.0 | 1.4 | 2.1 | 1.0 | 10.3 | 1.8 | 3.0 | 20.5 | 10.4 | 18.2 |
| 1900-2000 | Pro | 1.4 | 37.4 | 45.5 | 0.2 | 1.5 | 1.9 | 0.3 | 1.7 | 0.3 | 10.0 |
| | Ocp | 1.1 | 1.6 | 2.3 | 5.0 | 9.3 | 1.6 | 2.0 | 13.7 | 6.5 | 14.8 |
| 2000-2100 | Pro | 1.8 | 25.5 | 54.9 | 0.4 | 2.2 | 2.6 | 0.2 | 1.4 | 0.3 | 10.8 |
| | Ocp | 1.0 | 1.5 | 2.1 | 1.5 | 7.6 | 1.5 | 1.0 | 8.4 | 4.3 | 11.0 |
| 2100-2200 | Pro | 1.6 | 21.8 | 61.4 | 0.2 | 2.1 | 0.7 | 0.0 | 0.7 | 0.4 | 11.2 |
| | Ocp | 1.0 | 1.5 | 2.1 | 2.0 | 5.6 | 2.7 | 0.0 | 18.7 | 4.3 | 10.5 |
| 2200-2300 | Pro | 4.3 | 27.0 | 51.0 | 0.0 | 3.1 | 0.9 | 0.0 | 2.1 | 0.3 | 11.2 |
| | Ocp | 1.2 | 1.4 | 2.3 | 0.0 | 5.6 | 1.0 | 0.0 | 7.9 | 4.6 | 10.2 |
| 16 hours | Pro | 1.8 | 29.2 | 42.5 | 0.8 | 1.8 | 10.1 | 0.8 | 2.1 | 0.3 | 10.5 |
| | Ocp | 1.1 | 1.5 | 2.0 | 3.3 | 8.6 | 1.7 | 1.8 | 18.1 | 8.4 | 16.4 |

Legend

- Pro.** Proportion of vehicles in % (Sum may not add up to 100% due to figure rounding)
- Ocp.** Average occupancy of vehicles
- M&H** Medium and Heavy